



# MOBILAIR® M120

## Portable Compressor

With the world-renowned SIGMA PROFILE ⚙️

Flow rate 10.2 m<sup>3</sup>/min to 12.2 m<sup>3</sup>/min (360 cfm – 430 cfm)

# MOBILAIR® M120

The powerful combination of the highly efficient KAESER SIGMA PROFILE rotary screw airend and an energy-saving Cummins engine provides impressive performance and fuel efficiency. Available pressure ranges from 6 to 10.3 or 14 bar offer maximum flexibility for various applications.

The body panels ensure long-term corrosion protection and value retention thanks to high-quality zinc priming and tough powder coating, optionally available in custom colours. For maximum ease of maintenance, large housing cover panels allow easy access to the intelligently laid-out interior. Service and maintenance work can therefore be performed quickly and effectively, consequently ensuring maximum efficiency and compressed air availability.

## Intuitive operation

Machine start and stop, as well as pressure adjustment, are carried out by simply pressing a button on the SIGMA CONTROL SMART. Functions include an operating mode indicator, intuitive user interface, monitoring and system diagnostics.

## Durable and resilient

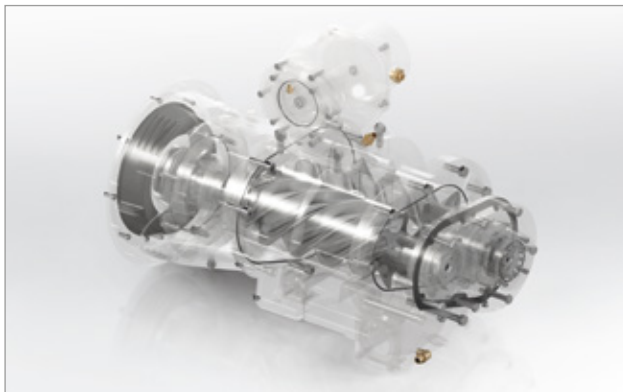
The MOBILAIR M120 provides a dependable supply of quality compressed air, even under the harshest of operating conditions. This resilient powerhouse operates flawlessly at ambient temperatures from -10°C to +50°C. The standard-equipped battery isolation switch prevents unwanted voltage loss during longer periods of inactivity.

## Service-friendly

The MOBILAIR M120 is particularly easy to service and maintain. All maintenance points are easily accessible, which makes changing the air filter with its safety elements quick and simple. Customised and individual maintenance contracts ensure that this high-performance compressor is always ready for construction site use.

## Made in Germany

The various ranges of MOBILAIR portable compressor are all manufactured at KAESER's headquarters in Coburg, Northern Bavaria. Equipped with the very latest technology, the recently modernised portable compressor plant boasts state-of-the-art equipment, including a TÜV-certified sound testing area for free-field sound level measurement, a facility for high-performance, high-quality powder coating and efficient manufacturing logistics.



## SIGMA PROFILE airend

At the heart of every MOBILAIR system lies a premium-quality rotary screw airend featuring KAESER's energy-saving SIGMA PROFILE rotors. The airend's optimised flow characteristics enable it to deliver more compressed air for less energy. Power is transmitted from the engine via integrated gearing. The rotors' low operating speed contributes to increased efficiency and longer service life.

# Future-fit



## Industrie 4.0 @ MOBILAIR

With the TELEMATICS 24 option, Industrie 4.0 comes to the construction site. Optionally available for various countries and following approval of the data usage contract, KAESER can equip the M120 ex works – at no extra cost – with a modem and connect it to the telematics portal.

**The best part:** KAESER pays the portal fees for 24 months. You can therefore view operating data, current messages and system location online.

Through anonymous evaluation of the machine data by KAESER, you help to make system operation and usage even more efficient and reliable.



# The M120 in detail



## Generous tank capacity

Construction site staying power: when full, the fuel tank has sufficient capacity to last an entire work shift without any problem. This saves costly downtime due to time-intensive refuelling.

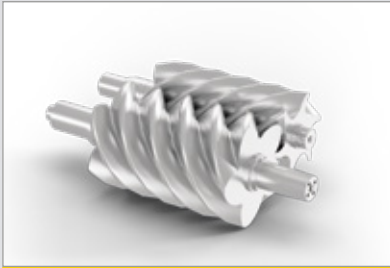
## Safe loading

Regardless of the destination, safety is KAESER's key priority when it comes to transporting the M120. The system is therefore fitted as standard with lashing eyes, forklift pockets, and a crane lifting device.

## Chassis versions

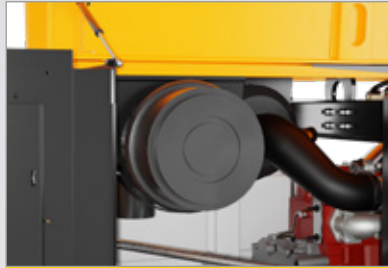
In addition to an overrun-braked chassis with a fixed or height-adjustable tow bar, an unbraked construction site chassis is also available.





**SIGMA PROFILE  
rotary screw air end**

At the heart of every MOBILAIR system lies an energy-saving SIGMA PROFILE rotary screw air end. Premium design, meticulous manufacturing and precision-aligned anti-friction bearings guarantee long service life and exceptional efficiency.



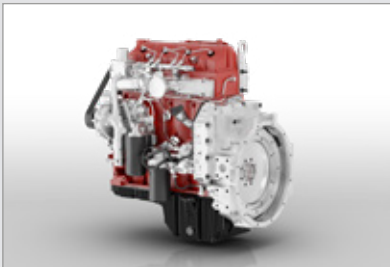
**Air filter**

When cleaning the air filter, additional safety elements prevent damage from occurring due to the ingress of contaminants. This enables maintenance to take place even under harsh environmental conditions.



**SIGMA CONTROL SMART  
controller**

Pressure is easily adjusted on the SIGMA CONTROL SMART compressor controller and can therefore be precisely adapted to suit the needs of the specific application. The easy-to-read display provides a clear overview of all operating data.



**Powerful Cummins engine**

A powerful Cummins engine with Tier 3 emissions stage and standard water separator ensures full power even with poor diesel fuel quality.



**Lower  
residual oil content**

For even faster maintenance, the M120 is equipped with two oil separator tanks and an oil filter. This makes replacement quick and easy for seamless, cost-effective servicing.



**Closed floor pan  
(option)**

The closed floor pan catches any fluids to safeguard against direct ground contamination. All drainage holes are sealed with screw plugs.



**Refinery equipment  
(option)**

In addition to the standard spark arrestor, the M120 can optionally be equipped with an engine shut-off valve, which automatically switches the machine off upon intake of combustible gases.



**Compressed air aftercooler  
(option)**

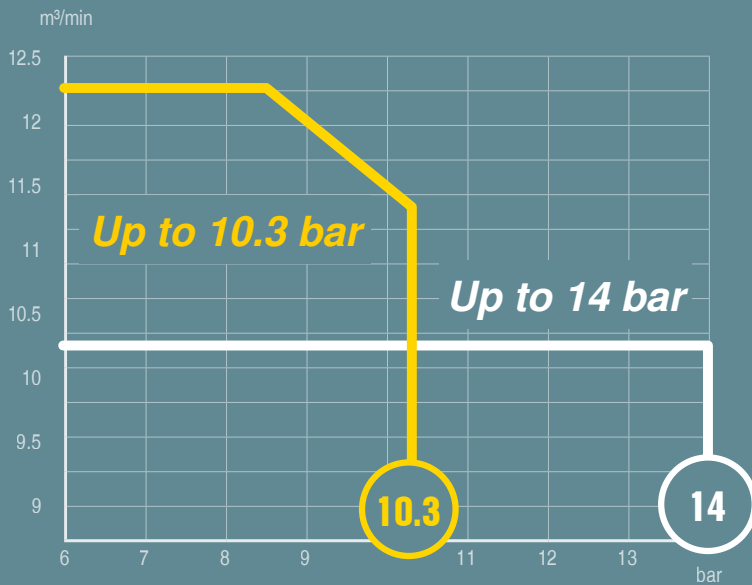
With the optional aftercooler, the compressed air is cooled to 7 °C above ambient temperature. Its angled installation ensures frost-proof drainage of the condensate, which is then evaporated by the hot exhaust gases.



**Technically oil-free compressed air  
(option)**

Depending on the application, the M120 can also be equipped with a microfilter combination for technically oil-free compressed air. This option delivers compressed air with an oil aerosol content of < 0.01 mg/m<sup>3</sup>, as per the requirements of ISO 8573-1.

# Choice of 2 pressure variants

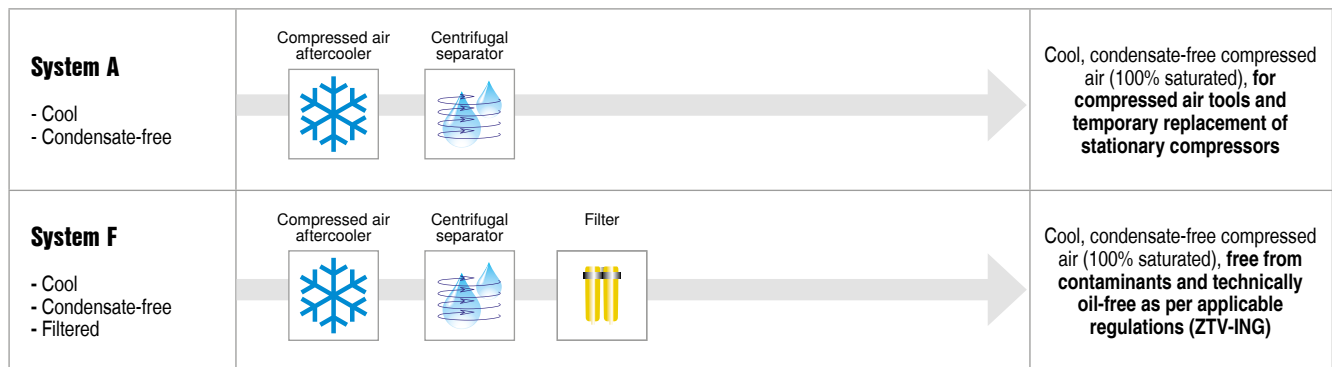


## pV Control

Maximum pressure (p) can be set between 6 and 10.3 bar in increments of 0.1 bar. Thanks to pV Control, this directly influences the maximum possible flow rate (V) and therefore offers even greater variability in terms of pressure and flow rate. This feature is particularly beneficial when working with longer hose lines.

Models are available in two pressure variants – 10.3 bar (with pV Control) and 14 bar.

# Compressed air treatment variants



# Technical specifications

Model	Flow rate at working pressure								Engine type	Rated engine power kW	Fuel tank capacity l	Operating weight kg <sup>*)</sup>	Compressed air treatment
	Pressure range to	7 bar 100 psi	8.6 bar 125 psi		10.3 bar 150 psi	12 bar 175 psi	14 bar 200 psi						
M120	10.3 bar 150 psi	m <sup>3</sup> /min	12.2	12.2	pV	11.6	-	-	Cummins QSF 3.8	97	180	1630	A / F
		cfm	460	460		410							
	14 bar 200 psi	m <sup>3</sup> /min	10.2	10.2	10.2	10.2	10.2	10.2					
		cfm	360	360	360	360	360	360					

\*) = Operating weight of unbraked base unit without options

# Dimensions

<p><b>Version:</b> Height-adjustable tow bar</p>		
<p><b>Version:</b> Fixed tow bar (With or without overrun brake)</p>		
<p><b>Version:</b> Skid-mounted (Optionally available with machine feet)</p>		

# The world is our home

As one of the world's largest manufacturers of compressors, blowers and compressed air systems, KAESER KOMPRESSOREN is represented throughout the world by a comprehensive network of wholly owned subsidiaries and authorised distribution partners in over 140 countries.

By offering innovative, efficient and reliable products and services, KAESER KOMPRESSOREN's experienced consultants and engineers work in close partnership with customers to enhance their competitive edge and to develop progressive system concepts that continuously push the boundaries of performance and technology. Moreover, decades of knowledge and expertise from this industry-leading systems provider are made available to each and every customer via the KAESER group's advanced global IT network.

These advantages, coupled with KAESER's worldwide service organisation, ensure that every product operates at the peak of its performance at all times, providing optimal efficiency and maximum availability.



## KAESER KOMPRESSOREN SE

P.O. Box 2143 – 96410 Coburg – GERMANY – Tel +49 9561 640-0 – Fax +49 9561 640-130  
E-mail: [productinfo@kaeser.com](mailto:productinfo@kaeser.com) – [www.kaeser.com](http://www.kaeser.com)